



PRODUCTS & SERVICES

2003

ESTABLISHED



EXPORTS TO MORE THAN

40

COUNTRIES

EXPERTS IN



Lifting & Rigging



Offshore & Marine Services



Lifting Equipment Inspection & Training



SHARJAH • DUBAI • ABU DAHBI • SAUDI ARABIA



125+
EMPLOYEES



CONTENT

1. Steel Wire Rope.....	04
2. Bridon Wire Rope.....	04
3. Lift ^x Heavy Lift Slings.....	05
4. Lift ^x Cable Laid Grommets & Slings.....	05
5. Lift ^x Hyperlock Slings.....	06
6. Lift ^x 9 Part Braided Slings.....	06
7. Steel Wire Rope Slings.....	07
8. G12, G10 & G8 Chains , Slings & Fittings.....	08
9. Polyester Flat Webbing Slings & Endless Round Slings.....	09
10. Lift ^x Hyperformance HMPE Round Slings.....	10
11. Ratchet Cargo Lashing Assembly.....	10
12. Special Purpose Slings.....	11
13. Full Body Safety Harness & Accessories.....	12
14. Green Pin Shackle.....	13
15. Green Pin Grade 8 & Grade 10 Chains & Fittings.....	13
16. LMS - Load Monitoring Systems.....	14
17. Modulift - Modular Spreader Beams.....	14
18. Liftek Load Test Waterbags.....	15
19. Liftek Subsea Airlift Bags (FESAB AND PSAB).....	16
20. Liftek Fully Enclosed Cylindrical Bag (FECB).....	17
21. Liftek Single Point Buoyancy Pod (SPBP).....	18
22. Liftek Cylindrical Type Load Test Water Bags.....	18
23. Our Services.....	19
24. Training Programs.....	22
25. Wire Rope High Pressure Lubrication.....	22
26. AMC Instruments.....	23
27. Rental Of Load Monitoring Solutions.....	24
28. Electromagnetic (EMAG) Inspection Of Steel Wire Rope.....	25
29. Liftek Calibration Services.....	25
30. Approvals & Accreditations.....	26
31. Facility.....	26

STEEL WIRE ROPE

Liftek maintains a large stock of wire rope for various applications. Our high quality wire ropes are sourced from Europe, Korea, India and UAE. All ropes conform to the relevant international and local norms and are supplied with Mill Test Certificates.

BRIDON · BEKAERT
THE ROPES GROUP

FEATURES

- Over 2,000 MT stock of superior brand wire ropes
- Brands include Bridon, DSR, Brunton Wolf, Usha Martin and Bharat Wire
- Upto 4½ inch Diameter in stock
- No minimum order quantity
- Tensile Grades: 1960 N/mm² , 2160 N/mm², EIPS, EEIPS
- Manufacturing Standards: EN 12385, API 9A, ISO 10425
- Certificates: Mill Test Certificate like DNV, Lloyds, & ABS



BRIDON WIRE ROPES

Liftek is authorized distributor for Bridon-Bekaert and keeps stock of their wire ropes used in different sectors

- Oil and Gas • Cranes & Industrial • Mining • Marine Industry, etc.

Bridon-Bekaert offers drilling lines with superior, industry leading ton-mile performance of up to 60% above the API standard. Bridon-Bekaert offers the best performing drilling lines in the industry with exceptional bend fatigue properties and superior resistance to abrasion, wear and crushing.

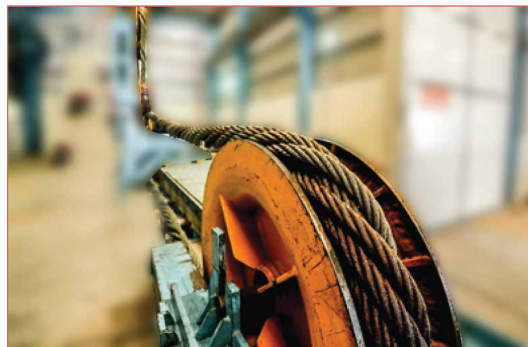


LIFT^x HEAVY LIFT SLINGS

With our decades of experience in the yield of heavy lifting slings, Liftek offers the largest and best heavy lift slings to more than 40 countries. These slings are made in-house at our Hamriyah Free Zone facility to a stringent quality plan.

LIFT^x CABLE LAID GROMMETS & SLINGS

- Machine made to ensure Effective Working Length Tolerances
- Typical Construction of 12x (6 x 36ws + IWRC); Tensile Strength 1,960N/mm²; EEIPS
- Manufactured to EN13414-3 or IMCA M179 Rev.1 specifications
- Twist free with visibly marked tuck & core butt positions
- Can be manufactured to small lengths hence catering to the requirements of many industries
- CGBL up to 4100 MT





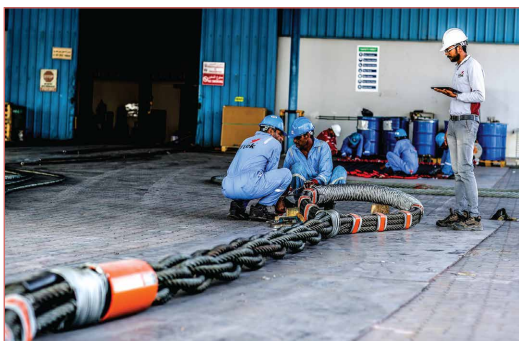
LIFT^X HYPERLOCK SLINGS

- Typical construction of 7x (6x36WS + IWRC)
- Slings upto 2100 MT CSBL
- Manufactured in accordance with IMCA M 179 Rev.1
- Flemish Eye Resign Filled Sleeve Termination (FERFST) with 100% termination efficiency which results in high breaking and improved load distribution
- Consistency in sling lengths
- No tail end protrusion making it safer to use
- Ease of handling



LIFT^X 9 PART BRAIDED SLINGS

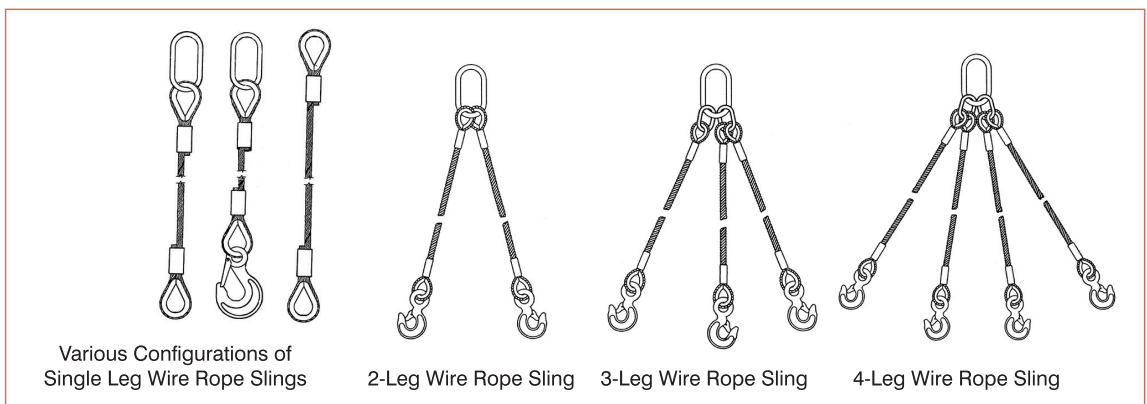
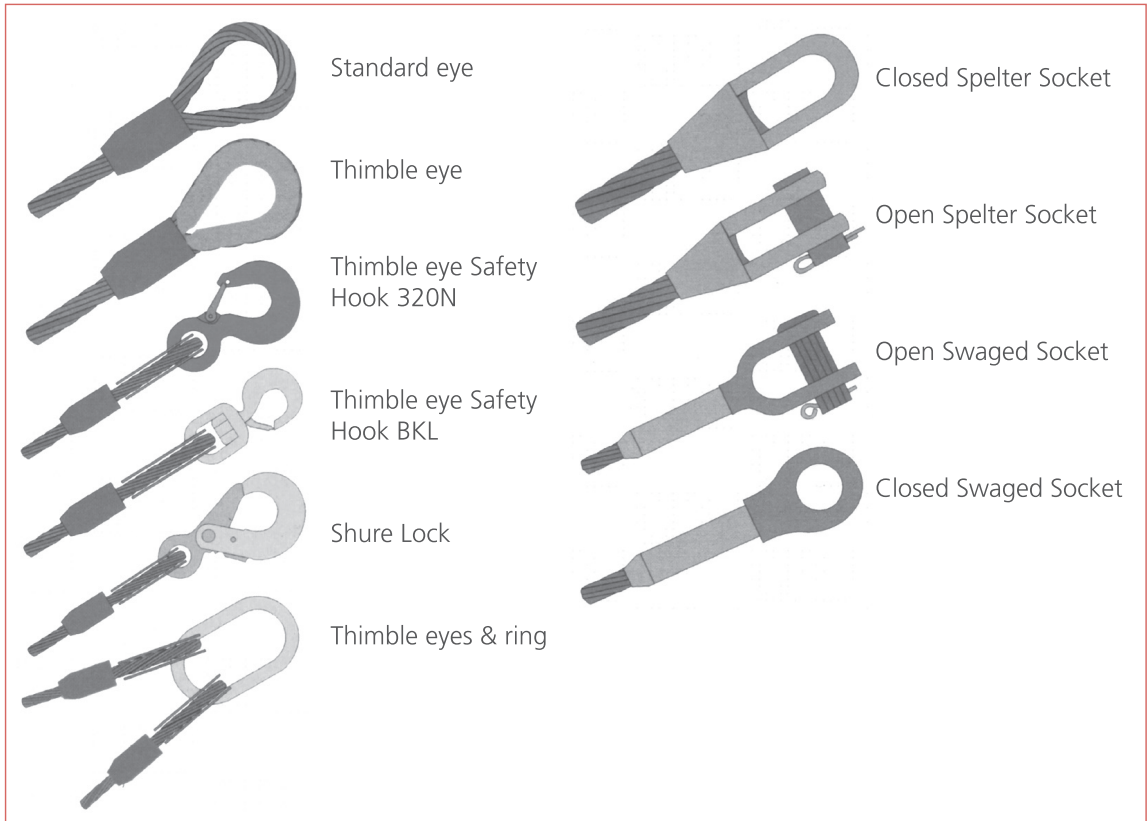
- Fabricated in 9x (6x36WS + IWRC); Tensile Strength 1,960 N/mm²; EEIPS
- Slings upto 2050 MT CSBL
- Standards in place to ensure effective working length tolerance
- Manufactured to ASME B30.9, Wire rope technical board, IMCA 179 standards
- Greater Flexibility, reduced weight and non-twisting characteristics
- Increased number of ropes in the eye and leads to higher efficiency by parallel positions of unit ropes in the flemish sling eye
- Supplied with in-house test certificate, and 3rd party class certificate upon request



STEEL WIRE ROPE SLINGS

FEATURES

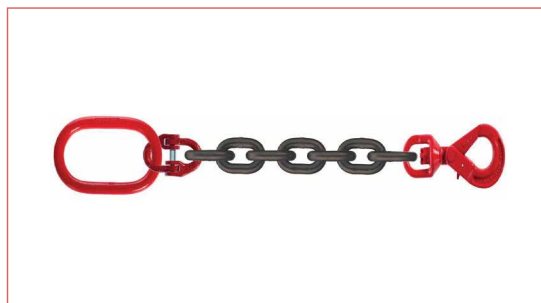
- One of the most comprehensive rigging facilities in the Middle East
- Fabrication of slings upto 4 inch (103mm) diameter with Steel (Flemish) and Aluminium sleeves
- Sling manufactured to EN 13414-1
- Fittings from Green Pin, Pewag, Rope Block, Toyo Lift, Crosby, GN Rope Fittings, Talurit, Wirop





G12, G10 AND G8 CHAIN, SLINGS AND FITTINGS

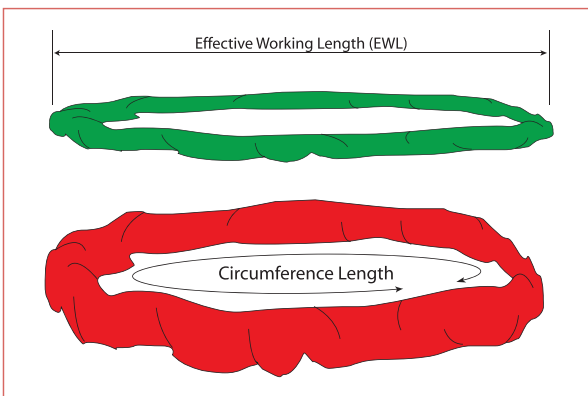
- More than 250 tons of G8, G10 and G12 chains in stock
- Upto 32mm lifting chain in stock
- Chains manufactured to EN 818-1 and Chain Slings to EN 818-4
- Fittings from Green Pin, Pewag, Crosby & ToyoLift





POLYESTER FLAT WEBBING SLINGS & ENDLESS ROUND SLINGS

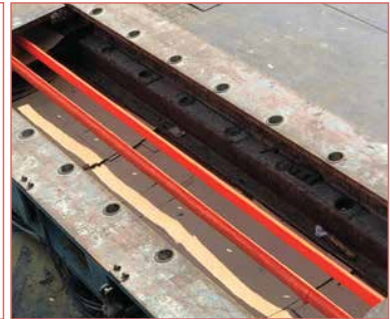
- Largest manufacturer in the Middle East & North Africa with annual capacity of 1,500 tonnes of soft slings
- Manufactured to EN 1492-1 & ASME B30.9 (Flat Slings) & EN 1492-2 (Round Slings)
- Highly customizable depending on client requirements . SWL from 500kg to 250 tons, EWL from 50 cm to 100 mtrs
- ISO 9001 certified production process with stringent quality control procedures





LIFT X HYPERFORMANCE HMPE ROUND SLINGS

- HMPE Round Slings with 100% HMPE Core
- Highly customizable depending on client requirements in terms of EWL
- WLL and type of outer cover.
- Higher capacity with smaller diameter, easy to handle.
- ISO 9001 certified production process with stringent quality control procedures.



RATCHET CARGO LASHING ASSEMBLY

- Large inventory of cargo lashing of various capacities and lengths
- Made with 100% polyester webbing
- MBL of ratchet lashings: 1 ton, 5 ton, 10 ton and 12 ton



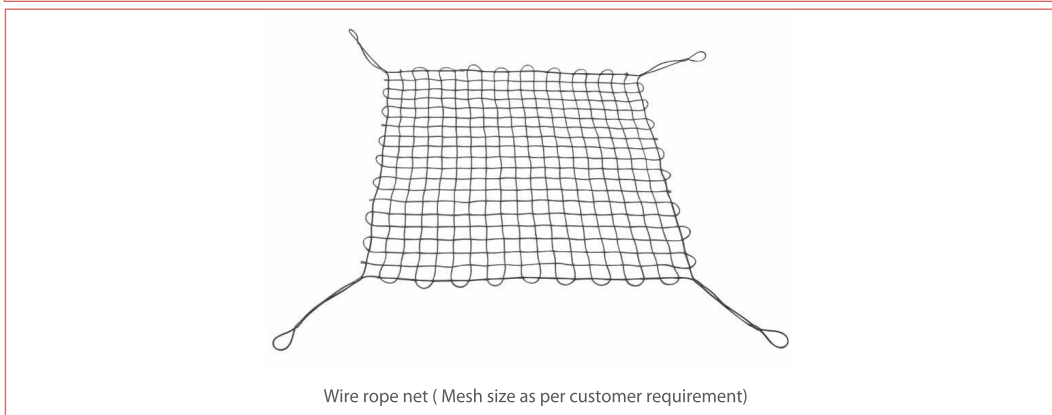
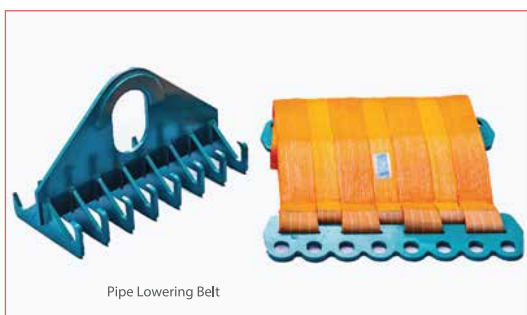
RATCHET LASHINGS			
Webbing Width	Minimum Breaking Strength	End-Fitting Type	Type
1" (25mm)	1,000 Kgs	Double J Hook	Ratchet
2" (50mm)	5,000 Kgs	Double J Hook	Ratchet
3" (75mm)	10,000 Kgs	Double J Hook	Ratchet
4" (100mm)	12,000 Kgs	Flat Hook/ Double J Hook	Ratchet/ Winch



SPECIAL PURPOSE SLINGS

FEATURES

- Heavy duty polyster webbing for durability and strength
- Steel end irons for greater strength with less weight
- Plastic tag with clear protective cover to protect data
- End irons painted
- Belts used around the world, in all types of climates, in sizes upto 60" diameter pipe
- Lowering - in belt and head iron sold separately
- Capacity from 20 ton to 60 ton
- Made in the United Arab Emirates



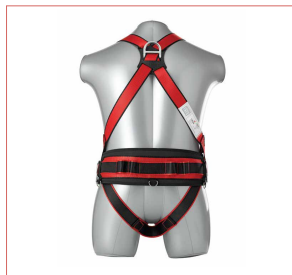


FULL BODY SAFETY HARNESS & ACCESSORIES

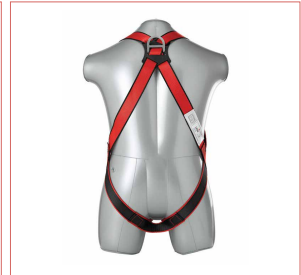
FEATURES

- Manufactured in-house to ISO 9001 certified manufacturing processes
- Annual capacity of 200,000 sets of harness and lanyards
- Manufacturing standard: EN 361, EN 358, EN 362, EN 355
- CE certified harness and lanyards
- Manufactured on computerized pattern sewing machines
- Tested on a fully computerized drop test setup

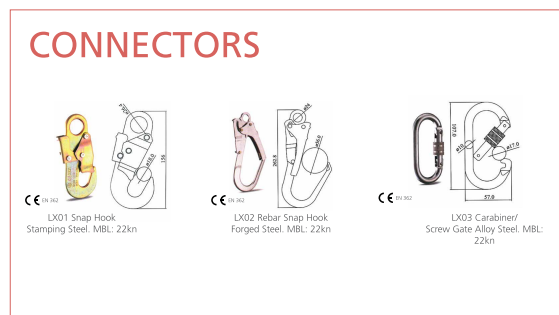
SAFETY HARNESS		
Type	Model	Features
Full Body Safety Harness	LX550	7 modes of adjustment 1 fall arrest Dorsal D-Ring 2 work positioning D-Rings Work positioning belt with tool holder rings Static strength > 15 kN



SAFETY HARNESS		
Type	Model	Features
Full Body Harness	LX500	6 modes of adjustment 1 fall arrest Dorsal D-Ring Webbing with dual color scheme Static strength > 15 kN



LANYARDS





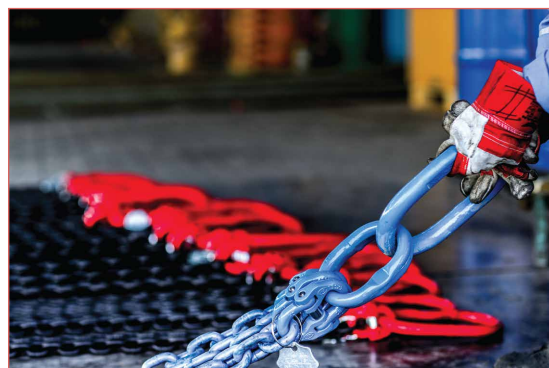
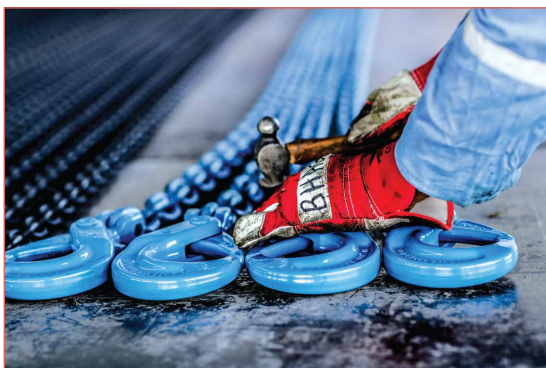
GREEN PIN SHACKLES

- Authorized Distributor for UAE
- Large stock available in Sharjah for immediate delivery
- Manufactured by Van Beest, Holland
- Wide range of Fittings - Shackles, Sockets, turnbuckles, Wire Rope Clips, Load Binders etc



GREEN PIN GRADE 8 & GRADE 10 CHAIN & FITTINGS

- Authorized Distributor for UAE
- Large stock available in Sharjah for immediate delivery
- Manufactured in France.
- Owned by Van Beest, Holland
- Chain and Fittings are available in Grade 8 & Grade 10





LMS- LOAD MONITORING SYSTEMS

- Authorized distributor for UAE.
- LMS products is engineered to the highest standards and defined by strength, accuracy and reliability.
- Comprehensive range of load-cell products and custom load cell designs available.
- Load links for all lifting applications, including Marine and Offshore.
- Buy it or Rent it
- Load Links
- Load Shackles
- Running Line Tensiometer
- Comprehensive Load Cells
- Handheld Load Cell Telemetry Display
- Data Logging
- Load Pins



MODULIFT - MODULAR SPREADER BEAMS

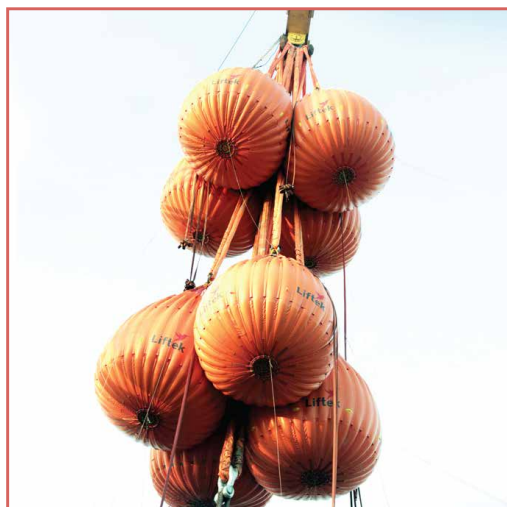
- Modulift is the market leader in Modular Spreader Beams.
- Size range from 2T to 5000T and span available from 0.4MTR to 100 MTR.
- Versatile, portable, light weight and cost effective.
- One Beam Many Lifts - Highly flexible configuration and interchangeable components enable a Modulift Spreader to be reused over many lifts.
- Made to ASME, DNV and EN standards.
- Supplied with Certificate of Conformity, Proof Load Test Certificate and DNV Type approval upon request.





LIFTEK LOAD TEST WATERBAGS

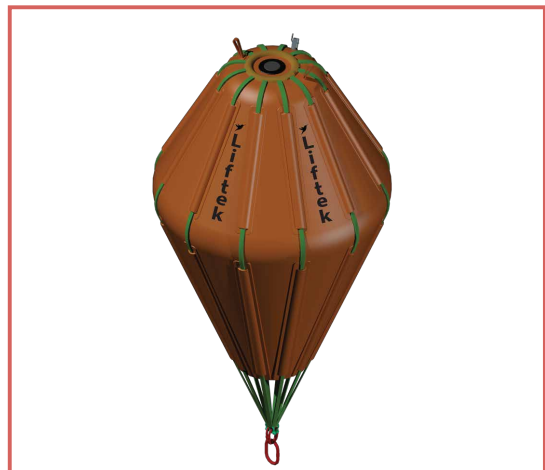
- These are engineered and fabricated based on the experience of numerous crane load tests we have done for more than 20 years.
- Our exceptional OP/CP Valve Mechanism enables the Open/Close control of the waterbag discharge by an easy single-pull of the rope and does not require a separate discharge hose to be installed.
- Heavy Duty UV-Stabilized, PVC Coated PE Fabric, offers the ideal combination of Strength for load-tests, Flexibility for storage and handling & Durability for long-life.
- The Lifting Set of all Liftek waterbags are certified by ABS to have a minimum FOS of 6:1 upto 55 MT & 5:1 for 110MT.
- Lifting Set components of all Liftek Waterbags are proof loaded to 2 x WLL.
- Damaged Lifting Set components are easily removeable and replaced.
- Damaged fabric can be fixed with our Repair Kit.





LIFTEK SUBSEA AIRLIFT BAGS(FESAB& PSAB)

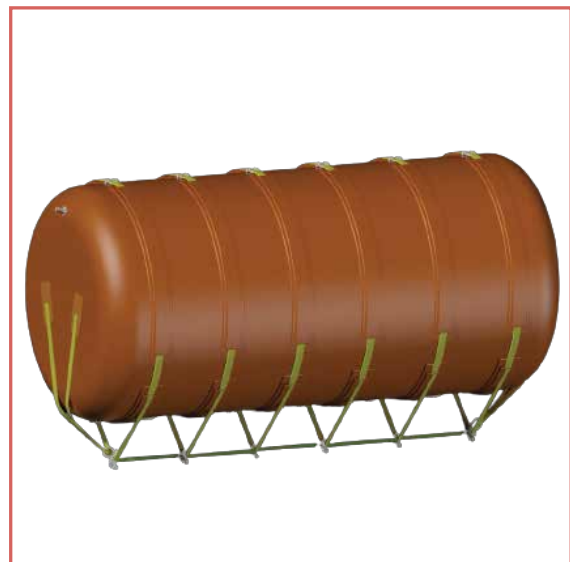
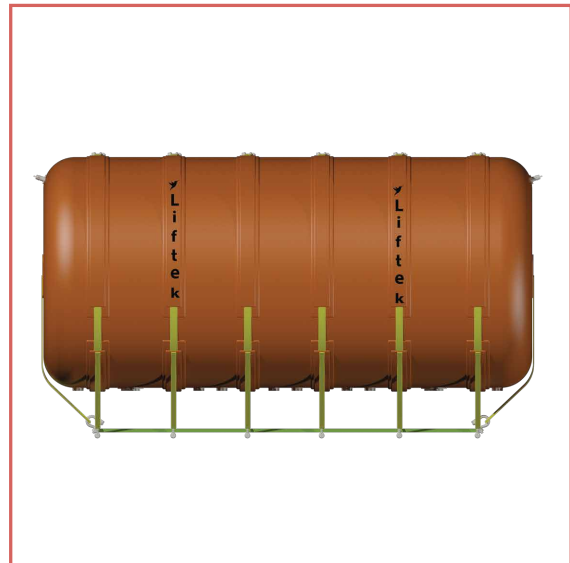
- Our superior quality airlift bags are designed for safe subsea lifting and equipped with a single point attachment to the load bearing webbing sling arrangement.
- Manufactured to FOS of 5:1 for the Airlift bag & FOS 7:1 for the Webbing Slings as per the requirements of IMCA D-016 Rev 4:2016.
- We manufacture both Fully Enclosed type (FESAB) and Parachute type (PSAB) airlift bags.
- Bags are fitted with a top-mounted 3/4" inlet valve assembly and quick-release camlock coupling.
- PSAB comes with top-mounted manual dump valve with a lanyard that can be operated from the bottom of the bag.
- Clearly labeled Inversion Line attachment point at the crown, with a minimum breaking force of 1.5 x the WLL of the airlift bag.
- Fabricated from durable & UV-resistant, heavy-duty 3-ply PVC fabric and RF welded seams for strength and integrity.





LIFTEK FULLY ENCLOSED CYLINDRICAL BAG (FECB)

- These are suited for buoyancy and general lifting applications including shallow water and surface flotation and salvage, reducing draft of a vessel, and towing operations
- Fabricated from durable & UV-resistant, heavy-duty 3-ply PVC fabric and RF welded seams for strength and integrity.
- Equipped with certified shackles and high tensile polyester webbing for stable lifting and flotation of even difficult-shaped objects.
- Fitted with suitable automatic air-relief valves and inflation/deflation ports.
- Low maintenance and easy to clean.
- Meets relevant norms of IMCA D-016 Rev 4:2016 guideline.





LIFTEK SINGLE POINT BUOYANCY POD (SPBP)

- SPBP is the perfect solution for providing buoyancy support for pipe-laying operations.
- Designed and fabricated for withstanding “through-lifting” and asymmetric loading.
- All the lifting components used in SPBP have a minimum FOS of 5:1.
- The buoyancy pod is fabricated with heavy-duty PVC fabric and has top and bottom stainless steel lifting points fitted with a certified shackle.
- The stainless-steel lifting points are connected internally within the pod, using a synthetic sling.
- SPBP comes equipped with filling/discharge ball valves and pressure relief valves.
- Low maintenance and easy to clean.
- Meets relevant norms of IMCA D-016 Rev 4:2016 guideline.



LIFTEK CYLINDRICAL TYPE LOAD TEST WATER BAGS

- These are suited for load test of Life boats, Liferrafts & Gangways.
- Fabricated from durable & UV-resistant, heavy-duty 3-ply PVC fabric and RF welded seams for strength and integrity.
- Fitted with suitable automatic air-relief valves, manual handling loops, filling & discharge ports.
- Capacity: 60 Litres to 600 Litres.
- Low maintenance and easy to clean.
- It can be supplied with load testing kit for testing 6 units or more.





OUR SERVICES

WATERBAG LOAD TEST SERVICES

- Liftek is of among the top service provider for waterbag load test services around the world.
- Our experienced team can offer a turnkey solution to the client, from rigging-plan to job execution.
- In-house capability and equipment availability to conduct up to 3300MT load test, anywhere in the world.
- We make your load test Safe, Quick & Economical.





OUR SERVICES

INSPECTION AND CERTIFICATION

Our competent Engineers conduct Periodic & Thorough Inspections of various industrial equipment including (but not limited to)

1. Inspection of Powered Lifting Equipment:

Examples:

- Mobile crane / crawler crane
- Overhead crane
- Tower crane
- Lorry loaders
- Offshore cranes
- Deck cranes
- Forklift trucks
- Manlift (MEWP)
- Suspended Access Equipments (Cradle)
- Construction Hoists
- Vehicle Lifts
- Traction Hoists
- Electric hoists
- Dock levelers
- Winches
- Air compressors
- Concrete pumps
- Pallet stackers



2. Inspection of Manual Lifting Equipment:

Examples:

- Chain blocks
- Lever hoists
- Snatch blocks
- Gin wheels
- Jacks



3. Inspection of Lifting Accessories or Loose Gear

All type of slings, shackles , eye bolts, clamps, rings, links, plates, hooks, loops, turnbuckles, vaccum lifters, magnetic lifter, pad eyes, Lifting beams / Spreader Beams





OUR SERVICES

4. Inspection of Pressure Vessels & Boilers:

Thorough Inspections are conducted according to the relevant BS EN standard and the Inspection Certificate or Report is issued.

Examples:

- Air receivers
- Storage Tanks
- Sandblasting Pots



5. Earth Moving / Construction Machineries:

- Telehandler
- Excavators
- Vibrators
- Backhoe loader/ shovels
- Skid steer loaders (Bobcats)
- Graders
- Wheel loaders
- Compact rollers
- Dozer

6. Containers / Structures / Baskets :

- Offshore containers
- Material baskets
- Custom-made Structures
- Concrete bucket
- Cargo carrying units
- Material Skips
- Lifting Frames
- Cylinder baskets
- Offshore baskets
- Skids
- Manbaskets
- Cylinder racks

7.PPE Items:

- Safety harness
- Lanyards
- Connectors
- Anchors

8.Marine Field:

- Bollard Pull Test
- Loose Gears
- Engine room / Pump room cranes
- Offshore Crane / Deck Crane
- Lifeboat Davits / Rescue boat davits
- Ropes and slings
- Winches

9.NDT:

- MT, PT, VT and UTG

10.Welding:

- Welders Performance Qualification Test (WPQ)
- Welding Visual Inspection
- Consultation for preparation of welding procedures (WPS, PQR)





OTHER SERVICES

FEATURES

1. High Pressure Wire Rope Lubrication upto 10.mm steel wire rope
2. Rental of wire Rope Spooler with capacity of 25 tons and black tension of 2 tons.
3. Rental of Water Bags of various capacities; 5 ton, 10 ton, 12.5 ton, 20 ton and 35 ton.
4. Rental of Calibratd load cells of various capacities.
5. Rental of solid test weights of various capacities with total of 200 tons.
6. Rental of spreader Beams

TRAINING PROGRAMS OFFERED

To make every lifting operation safe, Lifetek Group also offers a wide range of training programs through our Testing & Inspection Group, Lifetek Technical Safety and Security Consultancies (LTSSC)

Below are the lists of programs that we offer a LTSSC:

<ul style="list-style-type: none"> • Safe operation of mobile & crawler crane • Safe operation of tower crane • Safe operation of overhead crane • Safe operation of lorry loader crane • Safe operation of forklift • Safe operation of mobile elevating work platform(MEWP) • Safe operation of welding • Safe operation of back hoe loader 	<ul style="list-style-type: none"> • Safe operation of excavator • Safe operation of skid steer loader • Safe operation of telehandler • Safe operation of wheel loader • Safe operation of suspended access platform (CRADLE) • Safe use of PPE • General Site Safety 	<ul style="list-style-type: none"> • Dangerous goods handling • Abrasive blasting • Confined space • Control of substances hazardous of health (CoSHH) • Defensive Driving • Heat Stress • Flagman & Banksman • Basic Rigging & Slinging • Safe Practice of Industrial Radiography • Working at Height • Basic FireFighting
---	---	--

WIRE ROPE HIGH PRESSURE LUBRICATION

We offer high pressure lubrication of wire ropes from 16mm-104mm diameter range.

In only one application, wire rope can have its surface and groove pattern scraped clean of product build-up and grit, while at the same time new lubricant is uniformly applied to the newly-cleaned surface. Coating product then fills any open spaces within the groove pattern, and internal strands open to receive it. This is accomplished as the wire rope passes through a controlled, 100% pressurized, Immersion within the Internal Seal Lubrication Chamber. Surface moisture trapped within the internal strands is displaced and replaced with the newly applied wire rope coating product.

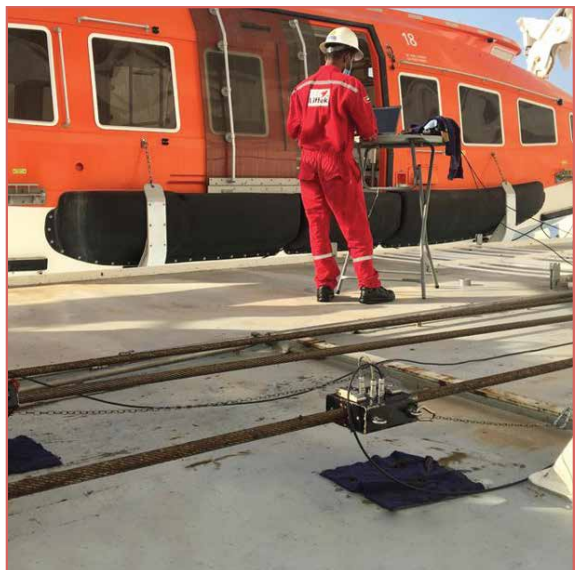
Our Lubrication System penetrates and cleans under high pressure even the most compact types of wire rope, such as Non-rotating, Dyform, and Locked coil with heavy grade lubricant from Nyrsofen, Germany.





AMC INSTRUMENTS

- Since 2007 AMC Instruments have been producing magneto-inductive devices and providing inspection services.
- Liftek is the sole authorized distributor and service provider for AMC in the Middle East.
- The devices from AMC are able to perform non-destructive tests on wire ropes with diameter ranging from 6 to 170 mm.
- The system measures LF and LMA signals, detecting internal and external faults, such as broken wires, corrosion, wear and fretting fatigue.





RENTAL OF LOAD MONITORING SOLUTIONS

RENTAL OF LOAD LINKS

- Liftek offers a wide range of Load Links and Load Link Shackles readily available for rental
- Available from 6.5 Ton to 1250 Ton ex stock • Range of upto 500 Meters • Suitable to be used with all major Shackle Manufacturers including Van Beest Crosby and GN • Safety Factor of 5:1
- Accuracy <math><0.5\%</math> of applied load • Matched hand held telemetry display • Every unit is load tested and certified • Designed and manufactured by LMS in UK

RENTAL OF COMPRESSIVE LOAD CELL

- Various capacities of compressive load cells readily available for rental • Team of qualified engineers are on hand to provide advice and solutions to weighing your structures, modules, skids etc. • We represent LMS, UK and all our weighing systems are developed through years of experience providing spot on accuracy • Full service includes mobilization, demobilization, provision of hydraulic iacks. power packs and load cells, complete with crew



TEST WEIGHTS RENTAL

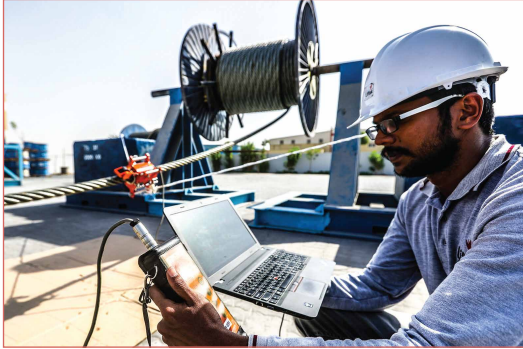
- We offer the hire of calibrated test weights to clients throughout the UAE at competitive rates for on-site load testing of cranes, plant and lifting equipment • Total stock of over 200 tons test weights • Individual calibrated test weights start at 20 kg upto 20 tonne weights
- Delivery throughout the UAE





ELECTROMAGNETIC (EMAG) INSPECTION OF STEEL WIRE ROPE

- State-of-the art equipment • Highly trained and experienced technicians • Inspection of wire ropes ranging from 20mm to 104mm • Ability to detect deterioration in the body of the rope rather than just on the surface • Measures the loss of metallic area and reveals localized faws
- Ropes do not have to be cleaned for inspection • Simpler, faster and more accurate than conventional visual inspection



LIFTEK - CALIBRATION SERVICES

- Liftek offers Calibration services for all kinds of T24 load cells • Calibration carried out on 200T and 800T test beds available at Liftek facility • Process include linking client load cell to the reference load cell using custom software application developed exclusively for calibration by LMS • All calibration certificates are valid for 1 year and will be issued by Power Jacks,UK • Calibration and testing performed to BS 8422:2003 (STANDARD and Supplementary A Applied)



CALIBRATION CERTIFICATE

Certificate and Calibration Procedures Prepared, Approved and Issued by:		Procedure Facilitated by:	
Load Monitoring Systems LMS House, Claymore Drive ABERDEEN, AB23 8SD UNITED KINGDOM		Liftek 1000, Irvine	
Equipment Details		Certificate No:	
Load Cell:	LMS250-051	ID:	FF546C
Capacity / Range:	250	Temperature:	Ambient
Units of measurement:	Tn	Customer:	Liftek FCZ
Force Applied:	Tension	Job Ref:	LCC-23-10

Calibration Reference: WPT800 Horizontal Test Bed S/N 0001, Measurement Device: 250 Tn Tensile load cell, S/N LMS250-05, Cert # LCC-02-05/1
 Equipment: The accuracy of the Equipment used is traceable to BS EN ISO 17020:2012 via UKAS LAB 0575
 Calibration: Standard calibration in accordance with BS EN ISO 7500-1:2018
 Calibration Performance: within +/-5% of any given Applied reading

Applied	Calibration Data							
	Reading #1	Reading #2	Reading #3	Min	Max	Avg. Reading	Max Error	Max Error
0	0	0	0	0	0	0	0	0.0
50.0	49.902	49.980	49.980	49.960	49.960	49.973	0.04	0.1
100.0	99.890	99.960	99.940	99.960	99.930	99.943	0.07	0.1
150.0	149.870	149.880	149.890	149.890	149.890	149.879	0.14	0.1
200.0	199.820	199.830	199.810	199.830	199.810	199.817	0.19	0.2
250.0	249.450	249.520	249.490	249.520	249.430	249.467	0.57	0.2

Name of Tester: Vimal T V Signed: Date: 14/04/2022
 LMS Approval: C Division Signed: Date: 14/04/2022
 Calibration cycle period: 12 months Due Date: 13/04/2023



APPROVALS AND ACCREDITATIONS

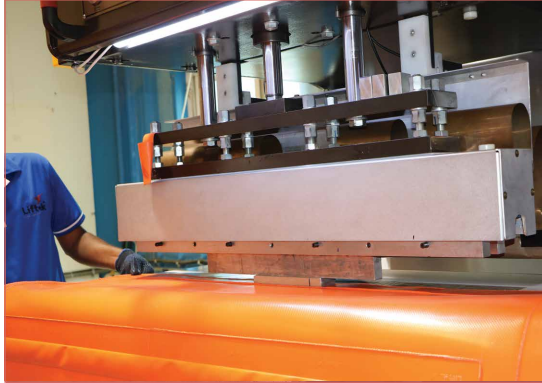
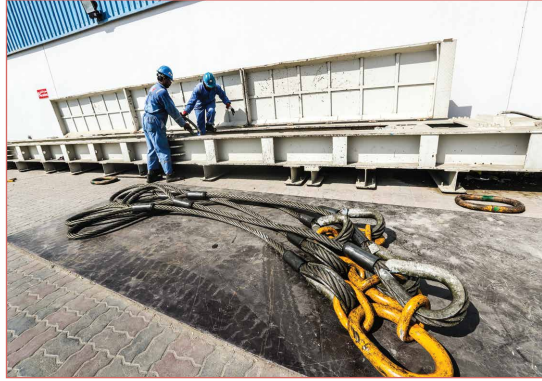
- Accredited by Emirates International Accreditation Centre (EIAC) & National Accreditation System (ENAS) as an Approved Inspection Body to ISO 17024
- Offices in Dubai, Abu Dhabi & Sharjah
- Computer generated inspection certificates / reports that can be transmitted electronically to customer immediately after an inspection
- LEEA trained and certified inspectors conduct Periodic and Thorough inspections of:
 - Powered Lifting Equipment i.e, Offshore Cranes, Tower Cranes, Mobile Cranes, EOT Crane etc
 - Manual Lifting Equipment i.e, Chain Hoists, Lever Hoist etc.
 - Loose Lifting Gear i.e, All types of Slings, Shackles, Spreader beams etc.
 - Pressure Vessels
 - Elevator & Escalators
 - Electromagnetic inspection of wire rope
 - NDT Inspection



FACILITY

- One of the most comprehensive rigging facilities in the Middle East
- 150,000 sq.ft workshop and yard in Hamriyah Free Zone, Sharjah
- Four Wire Rope Swaging Machines to swage upto 103mm steel wire rope
- Computerized 800 Ton & 200 Ton tensile test bench
- ISO 9001 certified production process with stringent quality control procedure
- 25 industrial grade heavy duty sewing machines





Liftek FZC
PO Box 41850, Hamriyah Free Zone, Sharjah, UAE
Tel: +971 6 525 0088. Fax: +971 6 525 0089
Email: info@liftek-intl.com

Liftek Technical Safety & Security Consultancies
PO Box 282259, Dubai Silicon Oasis, Dubai, UAE
Tel: +971 4 320 3735. Fax: +971 4 320 4736
Email: LTS@liftek-intl.com

Liftek Technical Services LLC
PO Box 8751, M-44, Mussafah Industrial Area,
Abu Dhabi - UAE
Tel: +971 2 552 2072. Fax: +971 2 552 2130
Email: LTS@liftek-intl.com

Saudi Liftek Company for Load Testing
208, Al Ghamdi Building, Dammam,
Kingdom of Saudi Arabia
Mob: +966 599 3030 69
Email: liftekKSA@liftek-intl.com

